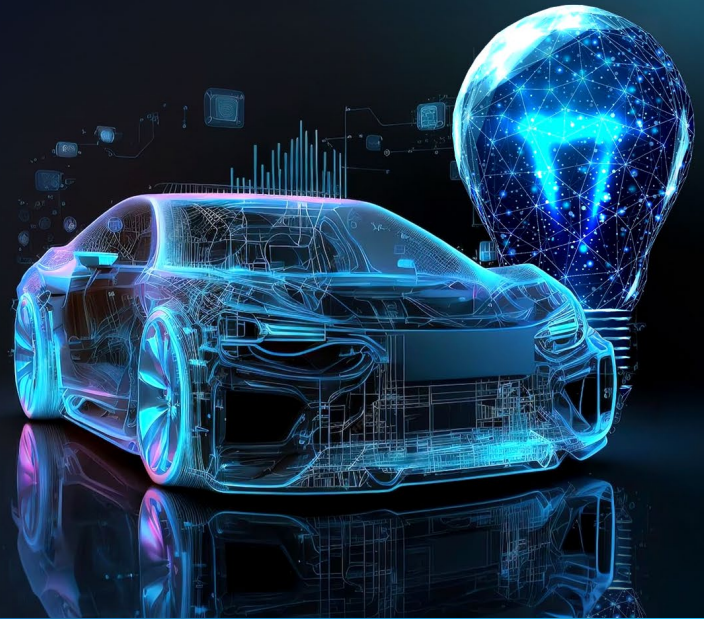


## Case Study

# Breaking Barriers: How We Cracked the Code to Patent Invalidation



## Background

A prominent semiconductor company approached us with a patent invalidation case involving an advanced electrical circuit design. The patent in question disclosed a system featuring multiple fuses that enable the circuit to maintain a low standby current absorption state while allowing a rapid transition to a full operating state. The invention was central to power efficiency improvements in semiconductor devices, making the challenge of invalidating it crucial for the client.

## Client's Requirements

The client had specific requirements and faced significant challenges in deciphering the complex circuit structure disclosed in the patent. The difficulty was further compounded by the lack of direct keyword references in the patent documentation, making traditional keyword-based search strategies ineffective.


## Challenge

Upon examination, the case revealed three robust prior art references categorized under Tier-X citations, as highlighted by the examiner. However, these references were not sufficiently exhaustive to challenge the patent's validity.

## Our Strategic Approach

- Conducted a detailed analysis of relevant IPC classifications and conceptual frameworks to refine the search direction.
- Identified key power control circuit domain competitors, including Samsung, Texas Instruments, Infineon Technologies, Intel, and Apple, to focus on industry leaders.
- Expanded the search scope beyond traditional keyword-based methods by analyzing competitor product landscapes and technological advancements.

## Impact

- Successfully uncovered a novelty-destroying prior art from Infineon Technologies, invalidating the patent claims.
  - Strengthened the client's legal position, enabling them to challenge the patent's validity with solid evidence.
  - Provided the client with a strategic advantage in a competitive and high-stakes technology domain.
- 

# Ingenious Brain

Ingenious e-Brain is one of the renowned consulting firms that provides 360-degree support to enterprises across the globe in improving their portfolios, be they Fortune 50 companies, startups, institutions, or independent inventors. With a team of 60+ IP professionals honing technical knowledge across various domains, we've been strategically guiding our clients throughout their journey, ranging from innovating to launching any product(s) or process(es) in the market, thereby avoiding last-minute roadblocks and associated commercial loss. We are an ISO-certified company with offices in India, USA, UK, Japan, and Germany.

As one of the leading IP consulting firms with a strong reputation for handling high-stakes cases, Ingenious e-Brain provides a broad range of patent services to enterprises across various domains. Innovation, knowledge, and transparency form the basis of our company's mission and vision. Along with cost benefits, we provide authentic results, ensuring confidentiality and security.

Copyright © 2024 Ingenious e-Brain

## We are located at

### India (HQ)

207-208 Welldone TechPark, Sohna  
Road Sector 48, Gurugram, Haryana  
122018

+91 124 429 4218

### Japan

1-12-14 Jinnan, 6F/7F/8F Shibuya  
Miyata Bldg, Shibuya-ku

+3 397 046 5950

### Delaware (USA)

8 The Green, Suite B, Dover, DE 19901

+1 302 450 1418

### California (USA)

99 S Almaden Blvd, Suite 600, San Jose, CA

+1 347 480 2054

### Germany

5th Floor, Hahnstrasse 70, Frankfurt am  
main, 60528

+49 335 2773 4678

### United Kingdom

13 Freeland Park, Poole, Dorset, United  
Kingdom, BH16 6FH

+44 207 193 3548

For enquiries e-mail us at  
[contact@iebrain.com](mailto:contact@iebrain.com)

Find more about us at  
[www.iebrain.com](http://www.iebrain.com)

Follow us on

